

SPACE NY

DESIGN • COLLABORATE • BUILD • MANAGE • INSPIRE

space-ny.com

- Space NY Overview
- Services
- Client Spotlight
 - G.H. Bass
 - NYDJ
 - Cinq a Sept
 - Khaite
 - Tiffany & Co.
 - Fish Cheeks
 - Macklowe Gallery
- Testimonials

LET US CREATE SPACE FOR YOUR BUSINESS TO THRIVE

Our team is here to provide creative solutions and end to end management with in-house fabrication services that bring ideas to reality.

Space NY was founded in 2016 by Anders Olson and Clay Crider. We have had the opportunity to work on brand projects for Retail + Hospitality clients that range from fabricating small activations to full interior brand development and execution. Our attention to detail, level of execution, and transparent communication have made us a trusted partner for small and large businesses alike.

We look forward to the opportunity to reimagine your spaces together.

IN GOOD COMPANY

TODD SNYDER

J. CREW

KHAITE

GIII
G-III Apparel Group



MACKENZIE-CHILDS

TIFFANY & Co.

KWIAT
DIAMONDS SINCE 1907

55
HOSPITALITY

OJG
ONE JEANSWEAR GROUP



SPACE NY

WHY SPACE NY?

We offer a tailored approach to suit your needs with a range of services to accomplish your goals.

- Design Services
 - Interior Design
 - Fixture Development
 - Visual Installation Design
 - Special Project Design
 - Event Design
 - Renderings
 - Shop Drawings + CD Sets
- Production
 - In-house fabrication studio
 - Network of makers across production specialties including: metalwork, printing, carpentry, furniture, upholstery, glass, casting, sculpture, and more
- Visual Merchandising Services
 - Showroom merchandising
 - Retail VM strategy + execution
 - VM directives and field documents
- Project Management
- Installation Support
- Logistics Management

small team **BIG IDEAS**

forward thinking creatives passionate about bringing brands to life in the physical world

agile enough to make it happen

RETAIL EXPERTS

over 50 years in combined experience creating successful brand environments and activations in the fast paced and high demand New York City market and beyond

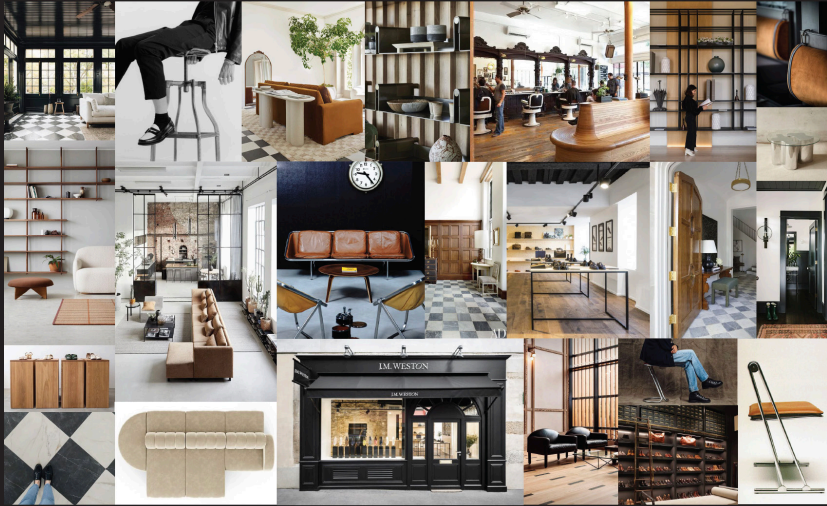
THINK GLOBAL, WORK LOCAL

our team has global experience and remains on the pulse of industry trends while maintaining a deep roster of local and global partners to bring ideas to reality on time and on budget

CLIENT SPOTLIGHT • G.H. BASS

Store Design Exploration

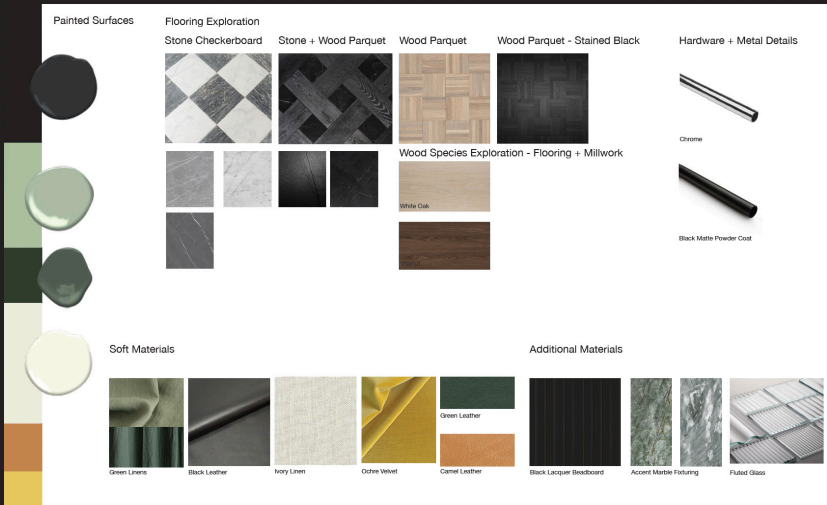
MOOD BOARD A



SPACE NY



Color + Materials C



SPACE NY

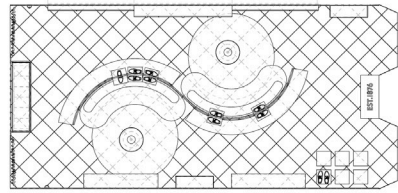


SPACE NY

CLIENT SPOTLIGHT • G.H. BASS

Store Design Exploration

Floorplan Exploration



FLOOR PLAN SCHEME A
SCALE 1/2" = 1'-0"

SPACE NY

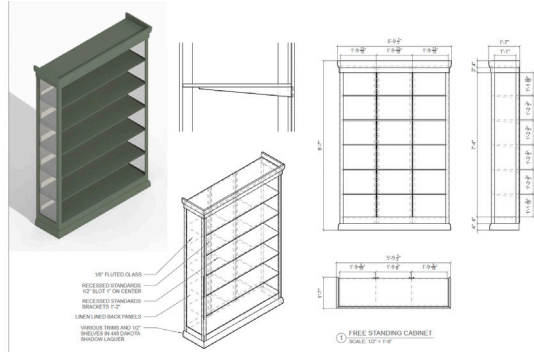
SPACE NY
200 NASSAU STREET
NEW YORK, NY

03 STAGE
020 FLOOR
010 00 0000

NOTE:

DATE: 04.13.23
SCALE: AS NOTED
DWG TITLE:
FLOOR PLAN
SCHEME A

Fixture Development



1/4" FLUTED GLASS
RECESSED STAINLESS STEEL
1/2" BOLT - ON CENTER
RECESSED STAINLESS BRACKETS 1/2"
LINEN LINED BACK PANELS
HIDDEN HINGES AND TOP SHEETS IN ALL CORNERS
BRASS LEGS

1 FREE STANDING CABINET
SCALE 1/2" = 1'-0"

SPACE NY

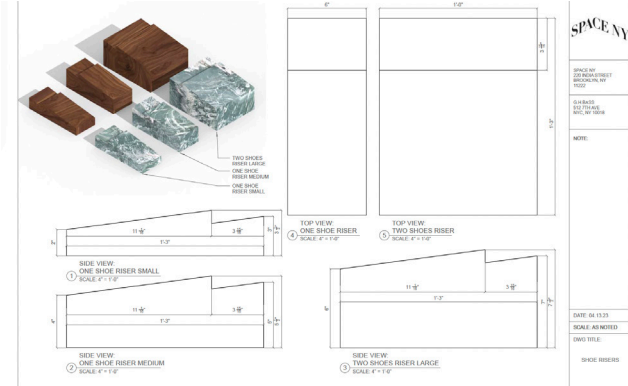
SPACE NY
200 NASSAU STREET
NEW YORK, NY

03 STAGE
020 FLOOR
010 00 0000

NOTE:

DATE: 04.13.23
SCALE: AS NOTED
DWG TITLE:
FREE STANDING
CABINET

Fixture Development



TWO SHOTS
ROPE LAMP
ONE SHOT
RIBBON MIRROR
ONE SHOT
RIBBON SMALL

1 SIDE VIEW
ONE SHOT RISER SMALL
SCALE 1/2" = 1'-0"

1 SIDE VIEW
ONE SHOT RISER MEDIUM
SCALE 1/2" = 1'-0"

1 TOP VIEW
ONE SHOT RISER
SCALE 1/2" = 1'-0"

1 TOP VIEW
TWO SHOTS RISER
SCALE 1/2" = 1'-0"

1 SIDE VIEW
TWO SHOTS RISER LARGE
SCALE 1/2" = 1'-0"

SPACE NY

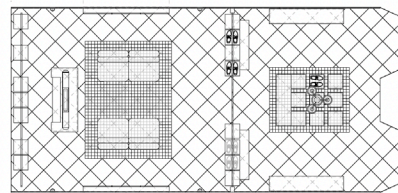
SPACE NY
200 NASSAU STREET
NEW YORK, NY

03 STAGE
020 FLOOR
010 00 0000

NOTE:

DATE: 04.13.23
SCALE: AS NOTED
DWG TITLE:
FREE STANDING
CABINET

Floorplan Exploration



FLOOR PLAN SCHEME B
SCALE 1/2" = 1'-0"

SPACE NY

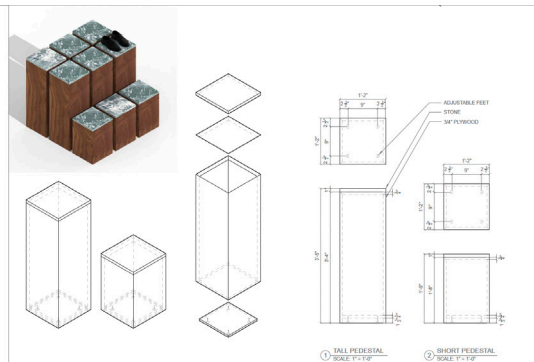
SPACE NY
200 NASSAU STREET
NEW YORK, NY

03 STAGE
020 FLOOR
010 00 0000

NOTE:

DATE: 04.13.23
SCALE: AS NOTED
DWG TITLE:
FLOOR PLAN
SCHEME B

Fixture Development



ADJUSTABLE FEET
STONE
1/4" PLYWOOD

1 TALL PEDESTAL
SCALE 1/2" = 1'-0"

1 SHORT PEDESTAL
SCALE 1/2" = 1'-0"

SPACE NY

SPACE NY
200 NASSAU STREET
NEW YORK, NY

03 STAGE
020 FLOOR
010 00 0000

NOTE:

DATE: 04.13.23
SCALE: AS NOTED
DWG TITLE:
SHOE PEDESTALS

Found Item Sourcing



Bauhaus Pendant \$2000

Bubb Light \$426.00

Chrome Bauhaus Pendant \$1900

PH 3/2 by Louis Poulsen \$1100

Jason Miller Pendant \$6000

Sebastian Summa \$1200

Italian Chrome Chandelier \$3100

Mosaic Lamp \$1900

CLIENT SPOTLIGHT • NYDJ

Design • Production • Visual Merchandising • Project Management



SPACE NY

CLIENT SPOTLIGHT • CING A SEPT

5 Pocket Denim Launch • Design Development • Production • Installation



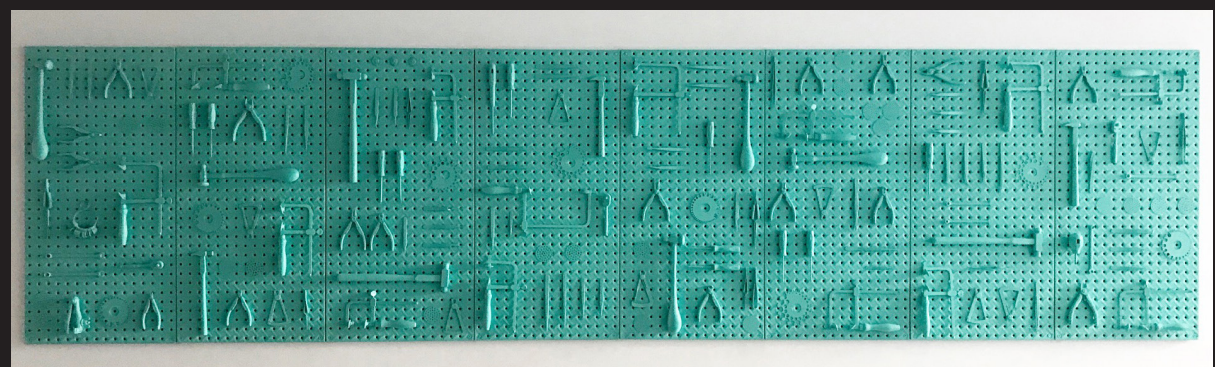
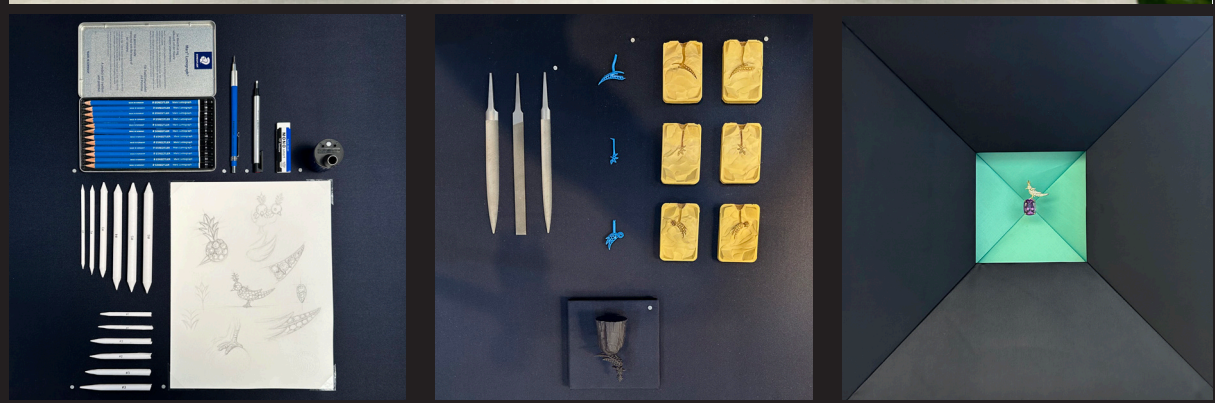
CLIENT SPOTLIGHT • KHAITE

Design Development • Production • Installation



CLIENT SPOTLIGHT • TIFFANY & CO.

Design Development • Production • Fine Art • Event Display • Installation



SPACE NY

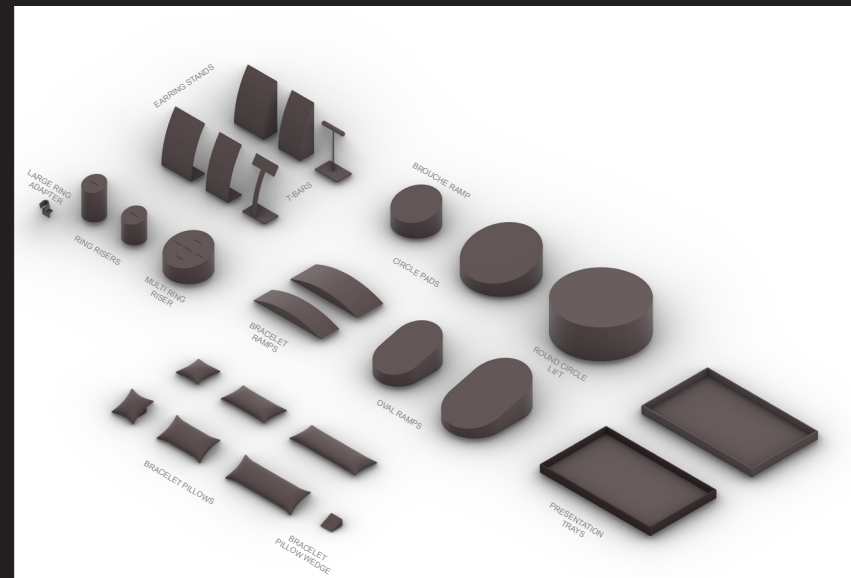
CLIENT SPOTLIGHT • FISH CHEEKS

Design • Project Management



CLIENT SPOTLIGHT • MACKLOWE GALLERY

Design • Production • Project Management



SPACE NY

SPACE NY
816 SMITH ST UNIT 1F
BROOKLYN, NY 11251

MACKLOWE GALLERY
465 PARK AVE
NEW YORK, NY 10022

NOTE:

DATE: 04.11.24
SCALE: NOT TO SCALE
DWG TITLE:
DISPLAY FIXTURES
R 00

TESTIMONIALS



Chris Paulk

President, G.H. Bass + Converse (apparel)
chrispaulk@gmail.com

Space NY delivers creative-forward work that brings ideas to life within real-world context—budgets, deadlines, space requirements, and brand standards. For G.H. BASS, the team honed a visual language for interior design, from showrooms to a retail store concept, and future physical experiences. With the BASS OUTDOOR brand, we needed a visually-unique fixture package for wholesale locations, a project that had a tight budget and timeline. Space NY brought an exciting package that broke molds, yet was functionally scalable and within budget.



Emily Barere

Creative Director, Kwiat + Fred Leighton
ebarere@kwiat.com

Working with Space NY is always a pleasure. They have brought both creativity and strategy to help tell our story in fresh innovative ways while always staying true to our brand's heritage. They consistently provide high quality work within budget, making them a trusted resource. We appreciate their talent and hard work and look forward to our continued partnership.



Erin Isaac

Director Brand Environment + Creative Services, NYDJ
Erineisaac@gmail.com

Space NY is the partner you always wanted to have. They are thoughtful & functional in their design, responsibly creative, problem solvers and creators of beautiful environments. Their consistency in exceptional high quality production, their design aesthetics & project management are the reasons we did many projects with them.

SPACE NY

www.space-ny.com

610 Smith Street, Unit 1F + 1J
Brooklyn, NY 11231

info@space-ny.com

347.920.1290
828.734.3929

SPACE NY